



CLUSTER MOUNTS

Features

Aluma-Form Band-Type Cluster Mounts

Combining the Best Features of Conventional Band and Wing Type Clusters without the disadvantages of either.

Fast

Lineman can install transformer-ready in 5 minutes. Neatly boxed unit is completely preassembled at factory.

Strong

Super-strong and corrosion-resistant 6061-T6 aluminum alloy extruded for high strength. No stronger cluster available.

Safe

Light-weight boxed units are easy and safe to store. Only one man needed to install on the pole.



Aluma-Form Cluster Mounts go up quick and easy.

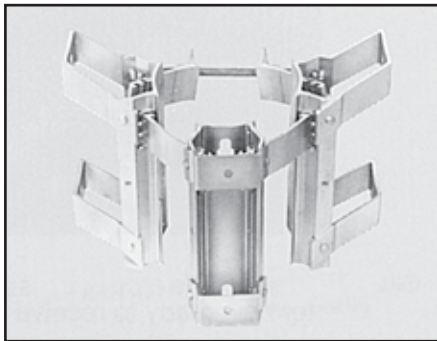
1. Remove preassembled cluster from box. Instruction sheet and transformer mounting hardware are included.
2. Measure pole at desired height with tape provided. Cluster easily adjusts to wide range of pole sizes.
3. For one-man installation, hang cluster on lag screw. (Lag screw locates cluster & DOES NOT BEAR LOAD).
4. Tighten double arming bolts as tight as possible. Cluster now ready to receive transformers.

CLUSTER MOUNTS

Banded Cluster Mounts

Available in wide range of models

All models are available in three pole size ranges and packaged in sturdy boxes; sufficient hot dipped galvanized transformer mounting bolts, nuts and lockwashers furnished; ground wire clamp, instruction sheet, and pole measuring tape furnished. See price sheet for further ordering information.



Model 6M3-6M

Mounts three 3kVA thru 50kVA transformers with 12" ANSI/NEMA type A lugs. Complete with 5/8" transformer mounting hardware and ground clamp.

Provides extra pole bearing surface giving increased support on extremely soft or old poles. Maintains vertical position of transformers where appearance is a factor.

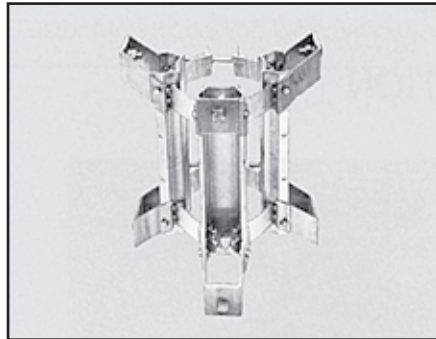


Jumbo Band Clusters Model 15M3-9-14-36

Triple band cluster mounts three 3kVA thru 500kVA transformers with ANSI/NEMA type A, B, or C, lugs

having 12", 24" or 36" lug spacing. Includes EP-18 extension plates and large pole band for use on 9.5" to 19" diameter poles. Included transformer mounting hardware & ground clamp. Required for use with 333kVA & 500kVA transformers or regulators which have 36" lug spacing. NEMA C adapter plates not supplied.

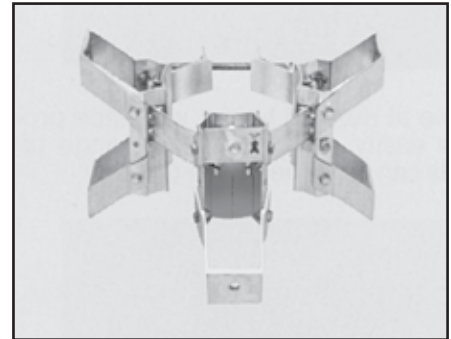
Double Band Cluster Mounts 3kVA thru 167kVA transformers, any combination of 12" or 24" ANSI/NEMA Type A and B lugs. If adapters are used 167kVA thru 250kVA transformers with ANSI/NEMA Type C lugs can be mounted.



Mounts Three Transformers

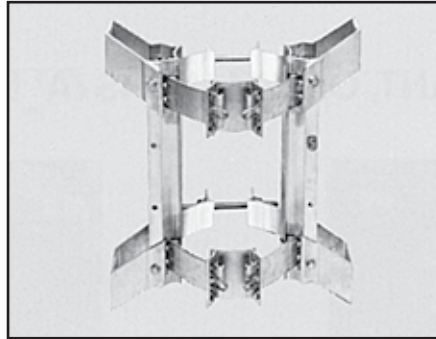
Model	Distance from pole
#15M3-6	6"
#15M3-9	9"
#15M3-969	9"-6"-9"

Single Band Cluster Mounts 3kVA thru 50kVA transformers (latest standards) with 12" ANSI/NEMA type A lugs.



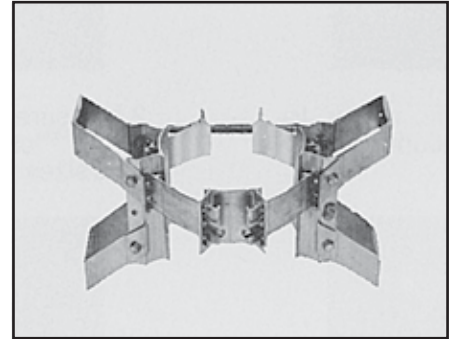
Mounts Three Transformers

Model	Distance from pole
#6M3-6	6"
#6M3-9	9"
#6M3-969	9"-6"-9"



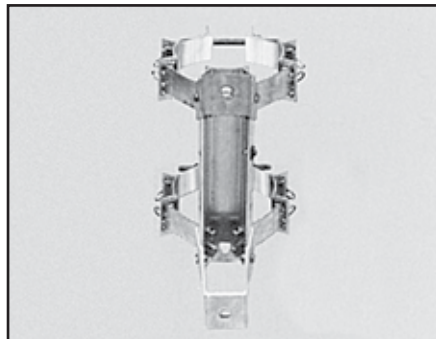
Mounts Two Transformers

Model	Distance from pole
10M2-6	6"
10M2-9	9"



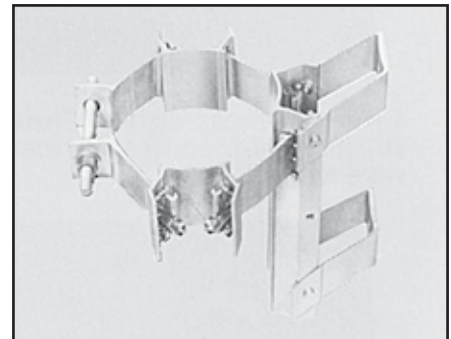
Mounts two Transformers

Model	Distance from pole
#4M2-6	6"
#4M2-9	9"



Mounts One Transformers

Model	Distance from pole
#5M1-6	6"
#5M1-9	9"



Mounts One Transformers

Model	Distance from pole
#2M1-6M	6"
#2M1-9M	9"

CLUSTER MOUNTS

Banded Clusters Loading Guide

ALUMA-FORM® a leader in the development and manufacture of aluminum alloy cluster mounting brackets, and with many years of research and experience, publishes our loading recommendations in an effort to assist users toward prudent product selection.

Normally our small cluster mounts (3–50kVA) are mechanically evaluated with per phase load applied at a 14” moment from their mounting pad surface. Our larger cluster mounts (50–500kVA) are mechanically evaluated with per phase load applied at least at an 18” moment from their mounting pad surface.

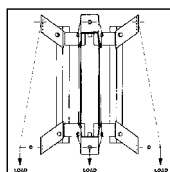
In actual practice, the center of gravity of electrical equipment frequently exceeds 14” or 18” from their mounting lugs. This increased distance is a moment arm and effectively “multiplies” the load carried by the cluster mount.

Since the main factors acting internally are combined bending, compression, tension and shear, a simple formula of ratio of moment arm lengths is not sufficient for determining recommended loading.

ALUMA-FORM®, therefore, provides the following Recommended Maximum Load per Phase data based upon empirical evaluations and engineering analyses for our various popular models of cluster mounting brackets. These loads are conservative and typically include a least a 2:1 safety factor. The customer is cautioned, however, that the accompanying data is published only for general information in assisting in cluster mount selection. The customer is advised to check pole loading, both in column strength and in butt bearing load. This data is subject to change without notice.

BAND-TYPE CLUSTER MOUNTS

Model	Maximum Recommended Equipment Load (in pounds), <i>per position</i> , for distance (in inches) from mounting pad face to equipment center of mass (C.O.G.):			
	14”	18”	22”	26”
4M2-6	1,275 lbs.	1,000 lbs.	820 lbs.	690 lbs.
5M1-6	3,200 lbs.	2,500 lbs.	2,000 lbs.	1,725 lbs.
5M1-9	2,500 lbs.	1,950 lbs.	1,600 lbs.	1,350 lbs.
6M3-6	1,275 lbs.	1,000 lbs.	820 lbs.	690 lbs.
6M3-6-5	1,275 lbs.	1,000 lbs.	820 lbs.	690 lbs.
6M3-6-M	2,140 lbs.	1,650 lbs.	1,375 lbs.	1,150 lbs.
10M2-6	3,200 lbs.	2,500 lbs.	2,000 lbs.	1,725 lbs.
10M2-9	2,500 lbs.	1,950 lbs.	1,600 lbs.	1,350 lbs.
15M3-6	3,200 lbs.	2,500 lbs.	2,000 lbs.	1,725 lbs.
15M3-6-5	3,200 lbs.	2,500 lbs.	2,000 lbs.	1,725 lbs.
15M3-9	2,500 lbs.	1,950 lbs.	1,600 lbs.	1,350 lbs.
15M3-9-5	2,500 lbs.	1,950 lbs.	1,600 lbs.	1,350 lbs.
15M3-969	2,500 lbs.	1,950 lbs.	1,600 lbs.	1,350 lbs.
15M3-6-14-36	5,000 lbs.	3,900 lbs.	3,200 lbs.	2,700 lbs.
15M3-9-14-36	4,000 lbs.	3,100 lbs.	2,550 lbs.	2,100 lbs.
6M3-9	1,020 lbs.	800 lbs.	660 lbs.	550 lbs.
6M3-969	1,020 lbs.	800 lbs.	660 lbs.	550 lbs.
4M2-9	1,020 lbs.	800 lbs.	660 lbs.	550 lbs.
2M1-6M	2,140 lbs.	1,650 lbs.	1,375 lbs.	1,150 lbs.
2M1-9M	1,020 lbs.	800 lbs.	660 lbs.	550 lbs.



BAND-TYPE